

Italian Renaissance Dress For Gavlinne

The inspiration

This dress is for Gavlinne and her persona is Italian Renaissance. She likes the colors red, black and purple, (not all on the same dress.) The pictures that I drew the inspiration from are these three paintings, ranging from 1520 to 1565. I was looking at the bodice, notably the closure of the bodice.



Gavlinne doesn't necessarily like the puffy sleeves of the 1520 picture. She prefers something smaller and the type that ties on. So the inspiration for the sleeves came from the following three paintings



¹ Unknown lady 1520's – portrait of a lady

² Giovanni Antonio Fasolo 1565

³ Paris Bordone 1530

⁴

⁵ Alessandro araldi – Barbara pallavinci

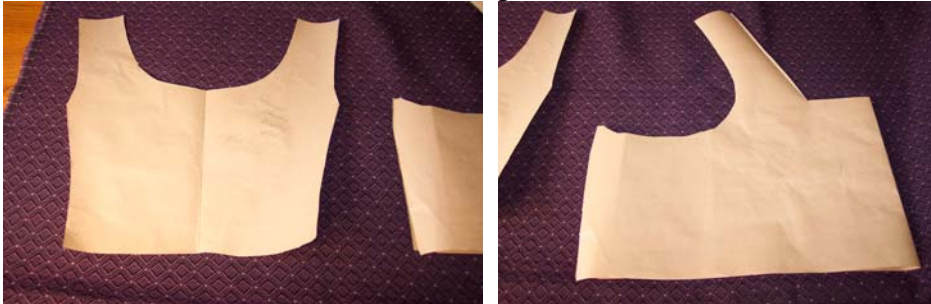
The materials

The fabric for this project was given to me by Master Harold in exchange for making him garb. The fabric is an upholstery fabric which had to be washed several times to get the fire retardant sizing off the back of it. For the closures on the front of the dress, Gavlinne likes big shiny stuff so I used clasps that were intended for belts as the lacings. I also used black ribbon and aiglets for the ties on the sleeves

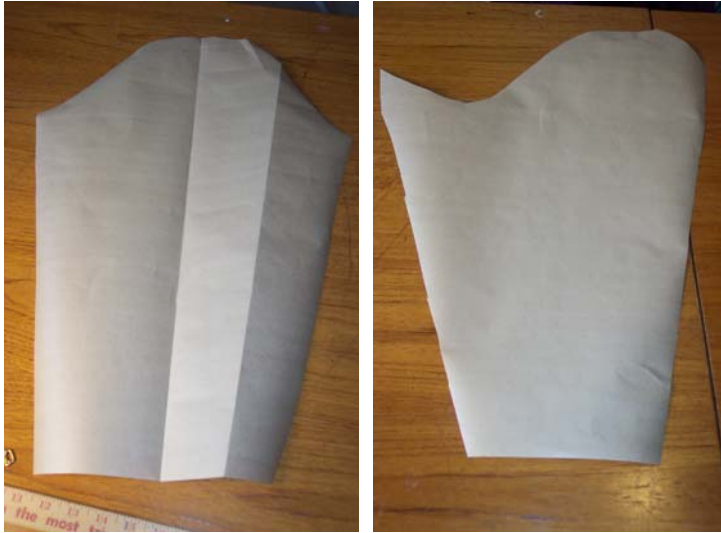


The construction

The dress started off with making a pattern for Gavlinne. Without a fitting I had to go by measurements and past dress patterns that I had for her. I adapted one to get the look that I wanted for this dress. I changed the front to put the “V” in and changed the side closure to a solid bodice. I took a basic sleeve pattern and moved the seam to the outside.



⁶ Costa Lorenzo – lady with a lap dog



From there I sewed the bodice together and lined it in black cotton. I hand sewed the armholes and added the black ties and aiglets to the armholes. Three per side as I had a limited amount of aiglets for this project.



The sleeves were then cut, sewn and bagged out and the top edge was sewn by hand. I added black silk ties to the sleeve head, corresponding to the ties on the bodice. At the wrist end I made two hand sewn eyelets to keep the wrist section closed when worn.



Last I added the skirt to the bodice. The skirt is cartridge pleated. It was very easy to do following the pattern on the skirt. Each diamond on the pattern allowed me to hand

gather the entire skirt without measuring to make sure that it was evenly spaced. Then I sewed the lining of the bodice over the rough edge of the skirt.



The finished garb

Here it is on Gavlinne for the first time at 12th night



Things to watch for

With this type of fabric, you need to wash it several times because of the sizing. The fabric becomes much softer and looses some of the body. Also, as this is not a natural fiber, you need to be careful when ironing it as it will melt some of the fibers. Lastly, with this dress I had to watch I didn't pull any of the threads on the wrongside of the fabric as this would cause puckering of the fabric.

Otherwise, this was a dream to create!